

Newsletter

Fall, 2021



PROPOSED STREETScape ENHANCEMENTS

Palm Aire Community Association Develops Whitfield Avenue Landscaping Plan

At the October 20th Board Meeting of the Palm Aire Community Association, Inc., President Barbara Robinson reported that the Association's Municipal Service Taxing Unit (MTSU) Committee has been meeting for some time with Manatee County personnel as well as a landscape architect to discuss improvements to the landscape along Whitfield Avenue.

As a result of these meetings for over a year, a master plan was developed, and David Flannagan was introduced and presented the proposed plan. The presentation illustrated the designs for a proposed master plan for re-landscaping Whitfield Avenue. The plan is the result of a year-long analysis and study by the planners.

Flannagan, a landscape architect, is with the firm of Kimley-Horn Planning and Design Engineering Consultants. Also in attendance were Manatee County representatives Ogden Clark, County Strategic Affairs Manager and Kaleena Otero, Senior Assessment Coordinator.

The master plan covers re-landscaping county property all along Whitfield Avenue from University Parkway to the end of the Palm Aire communities. The first section to be addressed runs from University Parkway to the blinking light at Country Club Way. This part of the design covers the bulk of the plan.

Continued on page 3

IN THIS ISSUE

- Whitfield Landscaping Plan
- Recycling Bits and Pieces
- Piine Trace
- Board Update
- Introducing 2022 Embracing Our Differences
- Realtor Corner
- Message from Palm Aire Country Club
- Letters to the Editor
- Walking Catfish
- Science Helps Us Understand Art



PROPOSED STREETScape ENHANCEMENTS

Some Thoughts from the President's Desk

Fall, 2021
Palm Aire Communities Council

I can hardly believe it is December already. Time seems to fly faster with each passing year.

I am pleased to report that the landscape enhancement project for Whitfield Avenue is moving forward. The Master Plan was presented to the Palm-Aire Communities Council Directors at the October meeting. The next step is to present the Plan to the Manatee County Commission for approval. Once the Commission approves the Plan, we will start detailed implementation.

My best wishes to all for a Happy Holiday season and a happy and healthy New Year.

Barbara Robinson



The Palm Aire Communities

Avista	Desoto Woods	The Links
Broadmoor Pines	Eagle Creek Condos	Misty Oaks
Club Villas I	Eagle Creek Villas	Pine Trace
Club Villas II	Fox Pointe	Preserves
Clubside	Fairway Six	Rosewood
Condo B	Gardens	Timberlake Village
Conservatory	Golf Pointe	Woodlake Villas
Estates	Highlands	Woodland Green
Country Lakes	Lakeside Woods	

The Palm Aire Communities Council Newsletter

Published by PACC, Incorporated
www.palmairecommunitycouncil.com
Daniel Reeves, Editor
You can contact the newsletter at
PalmAireNewsletter@gmail.com

Officers 2021-2022
Barbara Robinson, President
Susan Romine, Vice President
Susan Romine, Treasurer
Marguerite Puca, Secretary

Whitfield Avenue Landscaping Plan

Continued from front page.

The proposal is to remove some trees that are past their prime and to add new trees, palms, ornamental trees and shrubbery.

The project will be completed in several phases. The first phase starts at University and ends at the flashing red lights. The median at Whitfield and University will be re-designed with new palms, shrubs and ground cover. New uplighting will be installed.

The county has approved the Association's request to spend MSTU funds on the project. The next step is for the county to approve the proposed master plan.

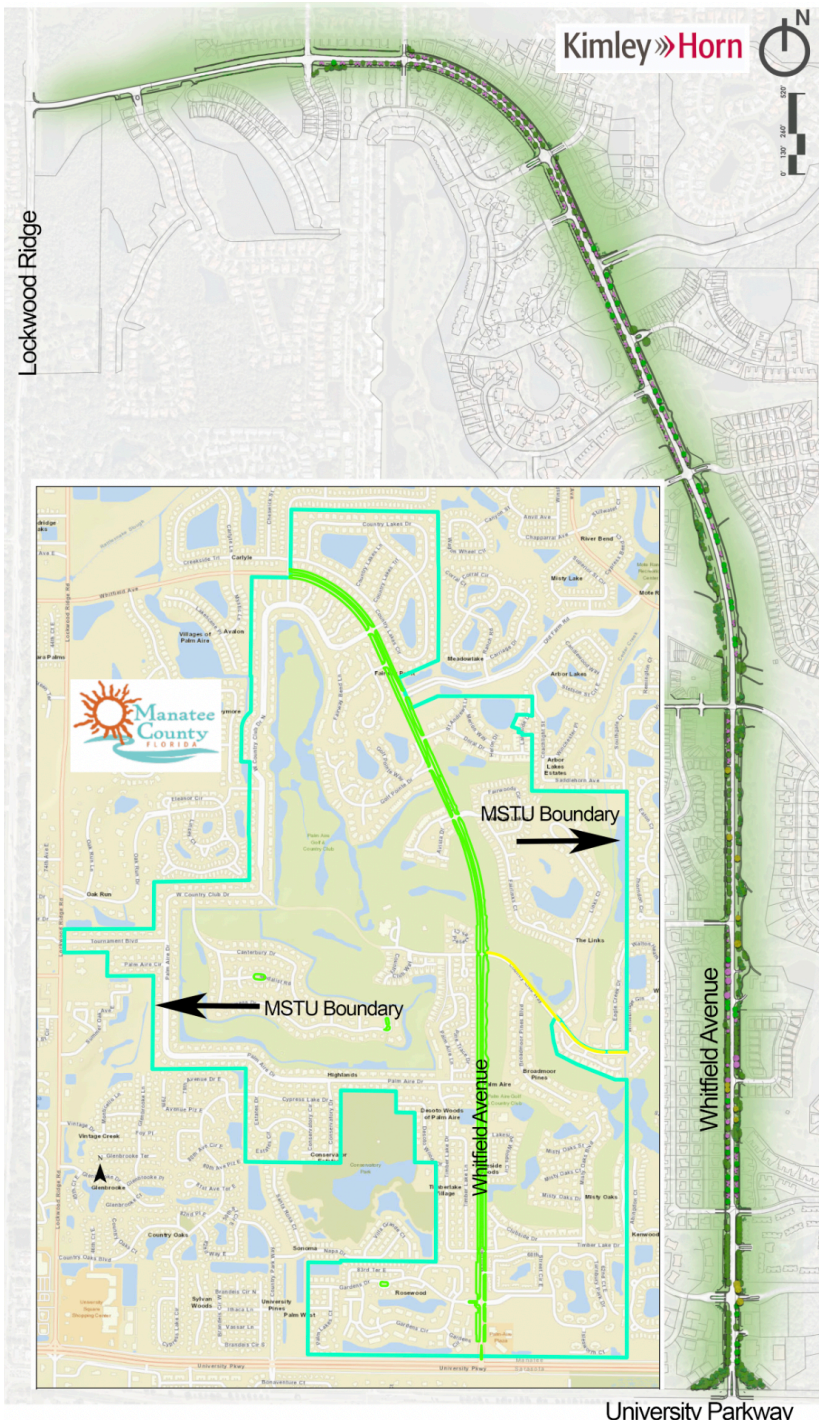
MSTU Committee Members

Barbara Robinson

Lesley Stein

Susan Romine

Marguerite Puca



The larger map depicts the landscaping areas along Whitfield Avenue that are part of the master plan.

The smaller map shows the MSTU Boundaries.

Years ago the Palm Aire Community voted to establish a Palm Aire Municipal Service Taxing Unit which was established in 1991.

MSTUs are special districts that can be set up to serve as funding mechanisms to provide services and projects for specific geographic areas within a county.

The ordinance established that all homeowners pay taxes to maintain the county-owned property, right-of-ways, islands, etc., within the Palm Aire community. This was done to provide more landscape maintenance services than Manatee County was prepared to provide.

The monies collected under our MSTU, which is included as part of property taxes, may only be used for landscape maintenance and enhancement. Specifically, Section 7 states "The services and facilities to be provided within the MSTU shall consist of the maintenance and upkeep of existing landscape, and the replacement and enhancement of landscaping, and located within the County right-of-way within the boundaries of the MSTU."

In the county budget, the funds are listed as the "Palm Aire Landscape MSTU Fund" and are collected at the rate of .2546 mills. This means if your home has a taxable assessed value of \$300,000, you will pay \$75.38 to this fund.

Recycling Bits and Pieces

by Susan Romine

In Manatee County, residential recycling started in 1998 but had a slow success in the beginning before becoming the big success it is today. Did you know though that if wrong items are placed in with the recycling the entire cartload must go in the landfill and can't be recycled? So, to keep the program a success we need to know what can and can't be recycled.

Let's go over a few things that should not go in your recycle bin. Styrofoam, plastic grocery bags and certain produce and meat containers and their wrappers should not go in the bins but can be taken to grocery stores like Publix to recycle. (No plastic bags should be in the bins at all.) Paper towels are no-nos. Those go in the garbage. Take out containers...well here is how you can tell about a lot of items.

The WASTE WIZARD on mymanatee.org will help you find out what is, or is not, recyclable. Once you get to the home page, just type in Waste Wizard and you will find the wizard where you type in the item you want to know about. I typed in "plastic take out container" and it told me that it is recyclable, but it must be clean. It even showed me a picture.

What about E-Scrap (electronics) and Household Hazardous Waste? You can take those items to the Lena Road Landfill, 3333 Lena Road, Bradenton, 34211, 8:00 a.m. to 5:00 p.m.

Monday through Friday for free. Additional information is available on the website at mymanatee.org/recycling or by calling 941-792-8811.

The point of all of this is to keep things out of landfills. They are incredibly expensive to permit and develop and the longer the life of an existing facility, the better for everyone's budget!

RECYCLING DO's & DON'Ts

YES PLEASE
Only the following five (5) materials belong in your Manatee County recycle can.

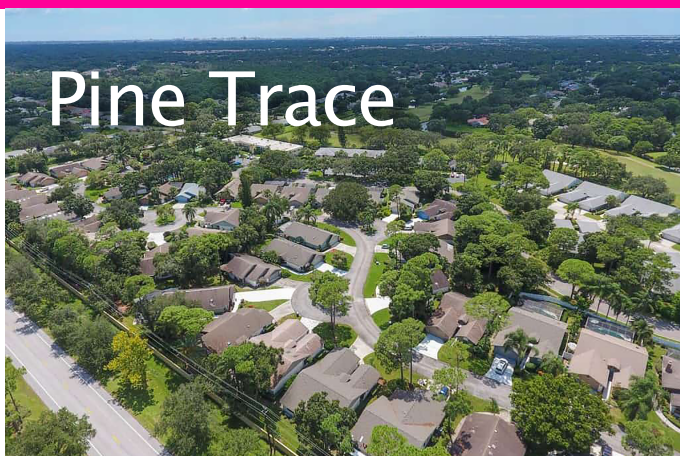
- PAPER**
 - Only clean junk mail, magazines, newspapers
- CARDBOARD**
 - Only clean flattened boxes
- METAL**
 - Only clean aluminum or tin cans
- PLASTIC**
 - Only clean plastic bottles and jugs
- GLASS**
 - Only clean glass bottles and jars

NO THANKS

- PAPER**
 - No wrapping paper, napkins or paper towels
- CARDBOARD**
 - No wet or spoiled cardboard
- METAL**
 - No pots/pans, auto parts, fencing or hangers
- PLASTIC**
 - No Styrofoam, plastic bags, hangers or garden hoses
- GLASS**
 - No broken glass, drinking glasses, light bulbs or mirrors

ALL ITEMS SHOULD BE CLEAN AND DRY

Neighborhood Spotlight



Pine Trace

The Pine Trace community is situated on a small circle in the golf community of Palm Aire. This is a lovely, private enclave of 54 individual spacious, airy and light-filled houses. It is a lushly-landscaped condominium community where each unit has its own yard and a two-car garage. There are two and three-bedroom floorplans with skylights and vaulted ceilings. Square footage ranges between 1,500 and 2,000.

These condo homes feature open and spacious living areas. Neutral, tile flooring throughout the main living areas, laminate wood flooring in guest rooms. Kitchens are beautifully equipped with appliances, countertops with built-in desks, breakfast bars and pantries. Expansive sliding doors lead to private patios and enclosed yards. Monthly HOA covers basic cable, insurance, exterior maintenance, roofing, grounds maintenance, landscaping, irrigation, pest control, and trash.



BRUNCH

at Palm Aire Country Club

FRESH SEASONAL FRUIT
VARIETY OF HOMEMADE SALADS
WARM MUFFINS, CROISSANTS, DANISH AND PASTRIES
WARM FRUIT COBBLER AND SWEETS

CARVING AND EGG STATION

FRESHLY PREPARED OMELETS AND MADE-TO-ORDER EGGS MADE WITH EGG WHITES, EGG BEATERS, OR FARM FRESH LARGE EGGS HOUSE CURED & SMOKED HAM, CARVED TO ORDER

HOT ENTREES

APPLEWOOD SMOKED BACON
SAUSAGE
POTATOES O'BRIEN
EGGS BENEDICT
CORNED BEEF HASH
BUTTERMILK BISCUITS AND SAUSAGE GRAVY
CHEESE BLINTZES WITH STRAWBERRY SAUCE
PANCAKES
BLUEBERRY FRENCH TOAST

ORANGE JUICE, GRAPEFRUIT, CRANBERRY, TOMATO OR APPLE JUICE 2.25 ++

Buffet Style

MEMBER PRICE: \$16.50 ++ • NON-MEMBER PRICE: \$18.95 ++

CALL (941) 355-9733 FOR RESERVATIONS.

Palm Aire Communities Council Board Update

Susan Romine

March was our Annual Meeting. Due to Zoom issues, we missed our quorum, so the vote on the FY 2021-22 Budget and other items were continued to April.

President Barbara Robinson has contacted University Park Country Club to see if they are having the same traffic backups that we are at University Parkway on the weekends. They are not, but they did offer the name of another person in Sarasota County to contact.

In **April**, the FY 2021-22 Budget was adopted.

Barbara once again requested Manatee County address the issue of the right-turn lane at Whitfield Avenue and University Parkway.

The Palm Aire Country Club offered a presentation by ARX Wireless for a cell tower by the Golf Course Maintenance Facility. Our representatives are to go to their communities and get feedback.

At the **May** meeting, Cathy Allen, our website guru, noted that some people are still trying to log on to the old website or having trouble getting on the new site. She indicated that they should clean their cookies and their caches.

Barbara noted that the Sarasota County official (Sarasota County handles the traffic lights on University Parkway through an Interlocal Agreement with Manatee County) is satisfied with the timing of the light on the weekend. It is time to get Commissioner Baugh involved.

Barbara has asked for more law enforcement speed patrols on Whitfield Avenue.

Representatives spoke for and against the cell towers. Barbara asked each representative to poll their community and bring the results to the next meeting.

At the **June** meeting, a letter from the Country Club's General Manager was read advising us that the Club had disengaged in conversations with no further pursuit of a cell tower.

Susan Romine received permission to look at the Bylaws for amendment purposes.

We were on break until September.

In **September**, we welcomed The Preserves as a new member. The wayfinding sign by the blinking light had the Links slot fixed. It had disintegrated. We are at a standstill as to how to proceed with decorating the landscaped island at Whitfield Avenue and University Parkway for the holidays until we hear from the landscape architect in October.

In **October**, we were provided a presentation of the Master Landscaping Plan for Whitfield Avenue by the landscape architect. As noted, this plan would be completed in phases as costs permit. The plan will go to the County Commission for approval.

We also decided to forgo holiday decorating the landscape median at Whitfield Avenue and University Parkway this year. We plan to hire a professional decorator, who will replace our worn-out lights with LEDs. Since the median will be re-landscaped next year, it makes sense to wait a year.

In **November** we talked about the landscaping contract with Hunter, but the big topic was speeding on Whitfield. All requests for monitors and Sheriff's Deputies are to be filtered through our President so the Sheriff's Office and the County are not bombarded with requests from 26 associations. It also carries more weight when the President calls. She calls almost every month or six months for the monitors and Deputies.



BLAKE JONES
BROKER ASSOCIATE

.....simply persistent.

blakejones888@gmail.com
WEBSITE: www.KnowPalmAire.com

COLDWELL BANKER REALTY
LICENSED REAL ESTATE BROKER
423 St Armand's Circle



Call (941)

932.1711



It's a new approach on Italian food. Simple yet bold, the Pascone's Ristorante' menu highlights include more than a dozen fresh pastas, slow-roasted meats, wild fish and seafood, and a whole palette of flavors not limited to one region or technique.



Pascone's Ristorante located at
5239 University Pkwy
Sarasota, Florida 34201
Email: CIAO@pascones.com

Open 4:30 p.m. Daily (*Closed Mondays*)
Full Bar
Happy Hour 4:30 p.m.–6:00 p.m.

Make your reservations at 941.210.7368

Introducing the 2022 Embracing Our Differences Art Exhibit & Education Initiatives

by Kathie Kaplan



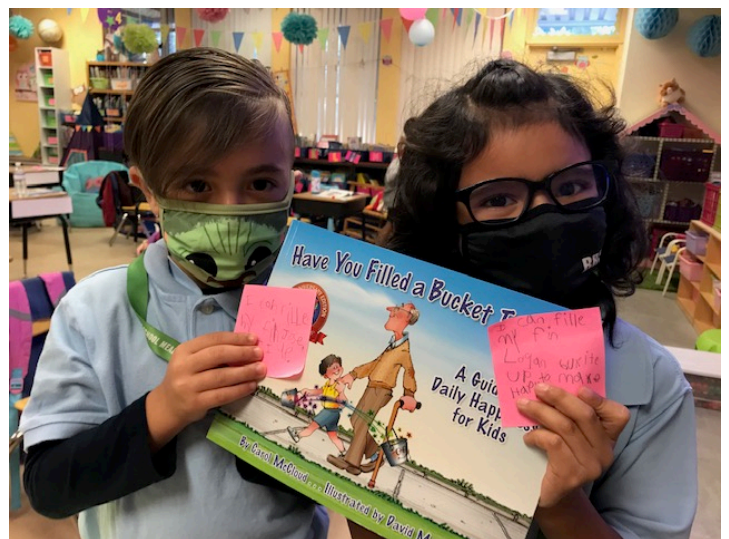
students to experience the outdoor exhibit. We believe that the outdoor exhibit can inspire life-changing truths through Art and Quote. This is an opportunity for younger students to begin their own realizations of diversity and acceptance.

The Embracing Our Differences exhibit at Bayfront Park is only one part of the success of our year-round program. This past year, the 2021 Embracing Our Differences Exhibit received funding from Charles & Margery Barancik Foundation to continue our presentation at Nathan Benderson Park over the summer. We are very appreciative of their help in sharing our story of friendship, respect, and inclusion with even more people in our community.

The Embracing our Differences mission is to use the power of art and education to expand consciousness and open the heart to celebrate the diversity of the human family.

We receive incredible quotations and artwork each year. EOD received a very special statement from a 7th-grade student who was extremely moved by the Exhibit. Referring to her own EOD entry, she sought to depict a little girl in front of an aisle of dolls advertised to look like the person buying them. Through her artwork, she was highlighting the struggles that people of color go through every day. The responses were incredible and appreciated by all. The best part...this wonderful, local 7th-grade student was the winner of the 2021 EOD Best-in-Show Student Artwork! Congratulations, Emily Norris.

This year the Embracing Our Differences Exhibit will be on display at Bayfront Park, in downtown Sarasota, January 15 through April 10, 2022.



This year's 2021-2022 school year and our Bayfront Park Exhibit programs include Free Field Trips, Bucket Filler Reading Day, Classroom Art & Quote Creation, Make-A-Day-Of-It, Embracing Our Differences (EOD) Reading Day, and the Docent Program.

Introducing Our Programs:

- **Free Field Trips:** Thousands of students visit the art exhibit and other arts and cultural venues.
- **Bucket Filler Reading Day:** Annually, in Sarasota and Manatee Counties more than 8,000 books will be distributed to the students. Sharing with students how easy it is to express kindness, appreciation, and love by 'filling buckets'.
- **Classroom Art & Quotation Creation:** Students in Sarasota and Manatee counties spend time creating art and quotations for submission to the 2022 EOD Exhibit.
- **Make-A-Day-Of-It:** Embracing Our Differences collaborates with area cultural organizations. Visits to partner organizations include Mote Marine Laboratory, Marie Selby Botanical Gardens, The Ringling, Van Wezel Performing Arts Hall, and Florida Studio Theatre.
- **Embracing Our Differences Reading Day:** Embracing Our Differences coordinates volunteers to read mission-aligned books to students in Manatee and Sarasota counties in the spring. Through this partnership with the Suncoast Campaign for Grade-Level Reading, over 8,000 books are provided annually for classrooms and students for their home libraries.
- **Docent Program:** Through the guidance of EOD's faculty advisors; student docents serve as guides for area elementary, middle, and high school

Will the markets flatten out or keep going up?

According to data from Florida REALTORS® and compiled by the Realtor Association of Sarasota and Manatee (RASM) the market took its usual September break but forecasts the "calm before the storm" said 2021 RASM President Alex Krumm.

The problem for buyers will continue to be a lack of inventory. The single-family home listings are at just 2.4 days of inventory for both Manatee and Sarasota County combined and 1.8 days for condos in both counties.

The median price for single-family homes in Manatee County is \$430,000 a 22% increase from last year. In Sarasota County, the median price is \$407,000, an increase of 27.8%. Condo median price for Manatee County is \$285,000. An increase of 29.5% and in Sarasota County it is \$325,000. A 28.8% increase.

Prices continue to rise and it is expected to go up approximately 22% in 2022. The majority of sales continue to be cash buyers but there is hope for buyers who need mortgages. Mortgage companies are working on new programs to help buyers compete with cash offers.

The final sales price or list to sales price continues to be at 100% of the list price and has been for months.

Buyers should be prepared for and be willing to work through multiple offers.

On another note, Sarasota has been chosen as the best place to retire for the second year in a row and has also been voted one of the best places to live by multiple magazine sources.

So be prepared for season. The global world has opened back up and our season is about to begin welcoming back our Canadians, Europeans and more.

In Palm Aire there were 39 Single Family Homes sold and 45 condos/Villas sold in the last 6 months. At the time of this article (Nov. 2021), there are 4 single-family homes for sale and 3 condo/villas for sale. Pendings are 14 condos/villas and 6 single-family homes. Days on market is approximately 7 days.



Julie Jacques, Realtor, ®GRI
Coldwell Banker Realty
Downtown Sarasota
100 North Tamiami Trail
Sarasota, FL 34236
941.323.1800 c

Julie.Jacques@cbrealty.com
Juliejacques.cbintouch.com

A sampling of recent sales:

Condominiums sold since June, 2021

8406 Gardens Circle	200,000
5604 Doral Dr.	250,000
6220 Country Club Way	311,700
7771 Pine Trace Dr.	332,000
7340 Golf Pointe Circle	405,000

Single-Family Homes sold since June, 2021

5509 83 rd Ter. E.	340,000
5120 Palm Aire Dr.	420,000
5672 Country Lakes Dr.	485,000
8117 Misty Oaks	685,000
7308 Links Ct.	1,225,000

Information provided by Steller MLS System and sold by various Realtors.

Backswing by Bill Landsdowne, PGA

First Assistant Golf Professional. Palm Aire Country Club

In my last article, a bit ago I know, we discussed the grip and how it was important to be relaxed. Start with a 3 out of 10 grip on the club definitely will help.

I would like to move into the backswing. I have had a number of students ask me when do I break my wrists in the backswing. That is one thing you should not think about. There should be a gradual break as you move the club back to the top of the swing. The top of the swing is different for everyone as it depends on your flexibility. Once you get to the top I want your club to change directions. I have seen many students get to the top then go gang-busters down to the ball which causes a number of issues, including a swing path over the top or outside to in. The club needs to have a smooth transition from the backswing to the point where we release the club to hit the ball.

In my next edition, we will spend some time with the release of the club as it is in every golf shot you hit except for specialty shots. The release of the club is all about timing and increasing clubhead speed. We will visit that in the next edition.

Message from Palm Aire Country Club

by Joe Rasset, General Manager

Palm Aire Country Club announced in the March issued newsletter that it was to embark on a multi-million dollar renovation of its cherished Champions Course. That renovation has taken place and we have announced an opening date of December 1st.

The restoration of the famed Champions Course is a tribute to Dick Wilson and to architect Michael Benkusky who captured the essence

to support your community and Palm Aire Country Club.

The Champions Course is not the only thing we have been renovating. In the coming months, we will be finishing up on our new interior upgrade of our Clubhouse. Working with an interior designer, we have outlined a new color pallet. Our updates include an entirely new look to our Golf Pro Shop, interior painting, new



Fairway 15 of the Palm Aire Country Club Champions Course

and highlighted yesteryears design and modernized it for today's game and players. The success of the redesign is that the Champions Course is truly a course for every player. The tee to green renovation encompassed the tee-tops, fairways, rough, approaches, green surrounds, bunkers and greens. Research has shown that this member investment into their club also benefits our residential communities by securing higher property values.

The Country Club and the Community rely on each other for success. Palm Aire is not a bundled community and the club relies on members of our community as well as outside of our community for membership and support. I bring this to light because as a resident who may not be a member, you do have the ability to access and enjoy our Sunday brunches. The only blackout dates to attend our famous brunch is Mother's Day and Easter. It is a small way for you

wallpaper, new bar flooring, recovering of chairs, and new carpet and tile throughout the entire Clubhouse.

Outdoor activities are flourishing, whether your interests are tennis, pickleball, water aerobics or outdoor dining, we have it all! Our outdoor dining area includes multiple fire tables for extra ambiance and what a beautiful time to sit outdoors, enjoy a sunset and be with friends. If safety is important to you, now might be the time to check out our "Club" life, we have an incredible membership and an incredible club.

Now might be your perfect time to come, discuss the many options of membership and take a tour. You can schedule a tour and discuss your future involvement with Palm Aire Country Club by contacting our Membership Director, Suzanne Gile at sgile@palmaire.net.

Letters to the Editor

Living in Clubside, I am quite familiar with the life situation at Whitfield and University. You are correct, Traffic engineers from Sarasota and Manatee counties should get together to study the traffic light sequence.

As I wait to turn into Whitfield, going east, There are time gaps when the lights are red and, I feel, traffic can be moving.

Not in Palm Aire, but close, try getting thru the traffic lights at Honore and Cattleman.

I will only get worse when the new housing, being built, welcomes their owners next fall.

I would just like to commend Dan Reeves for his terrific, well-researched article on "Waiting in Line". He hit the problem right on the head, as so many of us know from waiting in line, and for people to move.

—Santo Giambra

Right after the article, I noticed, there was quite a bit of time added to the Whitfield light, so his article made an immediate, positive impact.

So thank you Dan for your research and your great article.

—Jim Van Pelt

I AGREE. That light needs to be recalibrated. All of us in Palm Aire know the feeling that red light gives you.

You're in a rush on your way to work or to drop the kids off, and you end up backed up at that red light. Your blood pressure kicks up, your body tenses, and your brain screams LET'S GO! Turn green already!

It's more than just an everyday annoyance. Excessive red lights cost drivers time and gas, and can encourage risky driving habits - like speeding through the yellow light, trying to make it before it turns red!

—Pat



A brand-new sign has been installed at the end of Whitfield near University Parkway, replacing the one that was coming apart. I assume the sign at the other end of Whitfield, near Lockwood Ridge Road has also

been replaced. Fast work, if this is a result of your phone call to the county last week and Dan Reeves' PhotoShopped sign in the PACC Newsletter.

—Rick

As a bicyclist and seasonal resident, I discovered the Palm Aire Communities Council, PACC, and Manatee County MSTU rather obliquely through the cleanup campaign that Sarasota Manatee Bicycle Club conducts on Whitfield Blvd and your newsletter. I was picking up litter on Whitfield at least a year before I became a property owner.

I'm a board member of Preserves and would like to know why we're not members of PACC. The development that will be built at the corner of Whitfield and Lockwood Ridge, the traffic and condition of Whitfield Blvd, and the maintenance of the through streets in Palm Aire, especially Palm Aire D Tournament Blvd, and W. Country Club Dr. concern me and effect our neighborhood. How do we learn more about the value of PACC?

—Thank you, Alvion Kimball

[ED. NOTE: Your subdivision was not previously a member of PACCI; however, your HOA has recently joined and now have full membership.]

I read with great interest the article A Northern Connection by Rich Frost. We live in Golf Pointe and also have a camp on Willsboro Point on Lake Champlain in the Adirondacks so it was a pleasant surprise to find a local connection.

I grew up in the Adirondacks in Keeseville NY and always have been fascinated about the history of the area. I read Rich's column in the Lake Champlain Weekly.

I would like to connect with Rich regarding ADK history. I also have relatives in Glens Falls he may know.

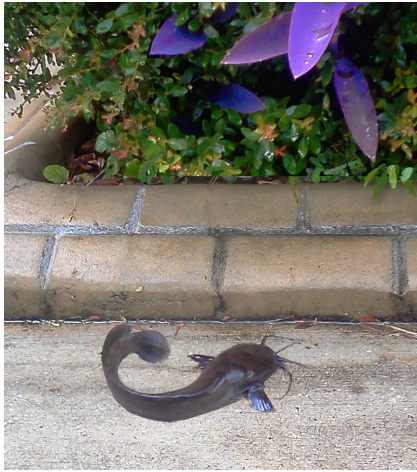
Would you please forward this email to him?

—Thanks, Jay Cohen

[ED. NOTE: your email was forwarded to Dr. Rich Frost, and hopefully by now you've connected.]

Walking Catfish

By Marguerite Puca



Florida is home to some extraordinary species – a few native, others invasive and introduced. One of the latter is the “walking catfish,” originally a native of Southeast Asia but now at home (as are so many of its fellow residents) with us here in the southeastern US.

Of course, the catfish doesn't actually “walk” across the ground – it should more accurately be described as “pulling itself along the ground by alternate use of its pectoral fins.” Still an unusual feat for an aquatic creature. Its body has two adaptations that make these excursions possible: a skin coated in mucus instead of scales (ensuring that the body stays moist for up to 18 hours) and an accessory breathing organ that allows it to breathe air.

Why would fishes decide to move from one watery location to another? Generally, for better access to water (for instance, the pond where they are living is drying up) or food sources (everything to eat in their current location has been consumed). When migrating, they often move on rainy nights, sometimes up to three-quarters of a mile. The preponderance of water features in the landscape in south Florida (canals, sinkholes, swamps, ditches, etc.) makes relocation easy, and they may also use storm sewer systems when they are full of water.

So where and when were these fish first introduced to Florida? It appears that they were first imported in the

early-60's for the aquaculture trade. Some broodstock escaped from a truck in the mid-'60s in Broward County, with another release in the Tampa Bay area (Florida has banned the importation and possession of the fish in 1967) around 1968. Today they are well established in southern Florida, with concentrations in the Everglades (although this existence may have been affected by another introduced species, the Burmese python..). Their movement north has been limited by their cold intolerance (temps below about 50 degrees will kill them in the wild).

Can you eat them? They are quite commonly consumed in their native Southeast Asia but not here in the US. Because they are invasive and adaptable, possession and transportation of live walking catfish is illegal without special state and federal permits. Due to their omnivorous eating habits, there is concern that they could get into commercial fish farming operations where they would consume eggs, small fry, etc.

The pictures of walking catfish out “walking” were



taken by the author in Tampa one May afternoon, when they came from a pond in the back of the house by the dozens. When the afternoon rains came, they were washed into gutters and down neighborhood storm drains.

Pictured in our masthead in this edition is one of the most elegant of the herons. This graceful Snowy Egret with immaculate white plumage with black legs and brilliant yellow feet was photographed at dusk in the pond adjacent to fairway 15 at the Palm Aire Country Club.

When breeding, Snowy Egrets grow filmy, curving plumes that at one time were sold at astronomical prices in the fashion industry, and the species was once on the endangered species list. Conservationists rallied to protect egrets in the early twentieth century, and the species is once again a common sight in shallow coastal wetlands. Males are a little larger than females; otherwise, they look alike. Although they migrate, the Snowy Egrets in our neighborhoods are year round residents.

They nest in colonies. The male selects the twigs and other materials for building the nest. However, all construction duties are the sole role of the female.



FUNCTIONAL FITNESS
&
PERFORMANCE

Agility Balance Confidence Core Strength
Heart Health Stretching



FUNCTIONAL FITNESS & PERFORMANCE

Focused on helping people move better and functionally. FFP focuses on agility, balance, core strength, flexibility, and heart health. FFP performs Functional Movement Screening (FMS) and Titleist Performance Institute Screening (TPI Golf Fitness Screening) to develop personalized training for each individual. Everyone can move better, confidently, and functionally.



5881 Whitfield Ave Sarasota

www.ffp.fitness

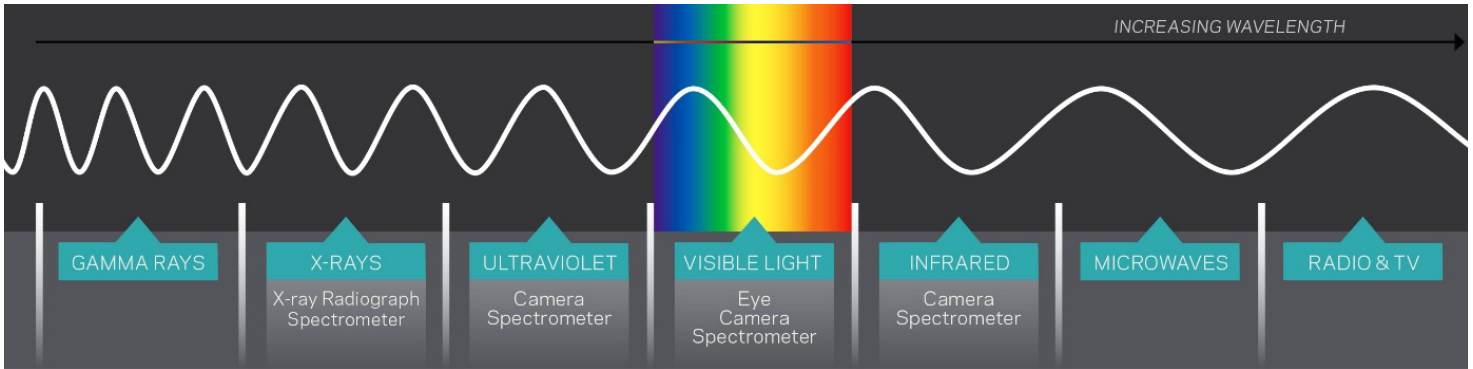
941-487-7807

Science Helps Us Understand Art

By Nick Barbi

When we look at the paintings hanging in the galleries of great museums like our own John and Mable Ringling Museum of Art, we appreciate the art through the best of all vision instruments, our eyes. Visible light, however, is just one small part of the *electromagnetic (EM) spectrum*.

Such an instance is shown below in the oil sketch by Joshua Reynolds in The Ringling collection, *John Manners, Marquess of Granby*. The image on the left is the preparatory oil sketch for a much larger version of the same composition that is also at The Ringling (SN389).



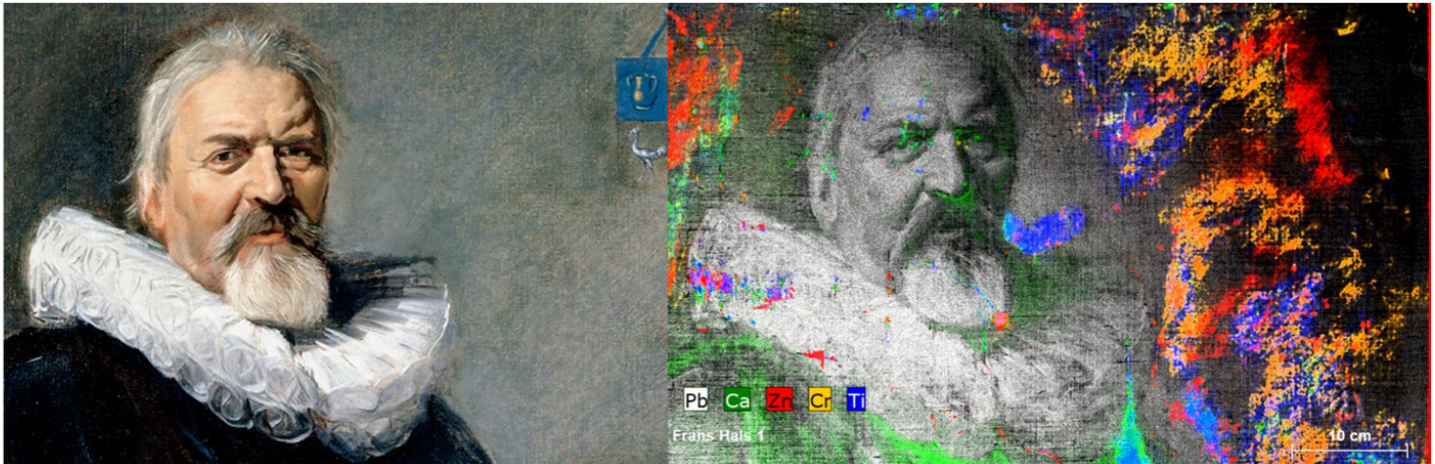
By looking at paintings using other regions of the EM spectrum, such as infrared or X-Rays, information is provided to the art conservator and curator that helps them understand the painting in more detail. Such understanding can help the conservator formulate the most appropriate conservation or restoration treatment before work is undertaken and help the curator provide the many visitors who visit the Museum with additional interesting and informative narratives on the history of the art.

One very prominent scientific technique used in the study of art is *X-ray Fluorescence (XRF)*, which provides information on the materials used in the painting. Scientists have developed instruments to sort X-rays emitted from the painting by their *wavelength* to uniquely identify the chemical elements present in the painting, such as calcium (Ca), iron (Fe), lead (Pb), chromium (Cr), mercury (Hg), etc. Conservators and curators can associate the identified elements and their locations with materials used in the painting, such as pigments, binders, fillers, ground layers, and canvases. Such association is enabled by their knowledge of the materials used by artists in general, artists of the period, and even the particular artist who created the work, as well as the materials and methods used to alter or restore the painting after its original creation. This is of real benefit in helping conservators understand more about the original content and color in the painting and what was added later, allowing them to bring the painting back to a state that is closer to its original appearance. XRF can display an element or a group of elements selected by the conservator to map the presence and amount of the element across the painting, often showing us a much different view of the painting from what we see with our eyes.

The XRF image of the oil sketch (on the right) is a bit eerie: while our eyes are gazing inquisitively at the painting, there is a hidden pair of eyes gazing right back at us. The XRF image reveals the distribution of pigments containing iron and lead, displayed in *grayscale*. This new image tells us that Reynolds reused a portrait on canvas as a support and painted a new oil sketch on top of it. It is assumed that this sketch (SN11656) was a precursor to the final painting (SN389), used by Reynolds to convince Mr. Manners to commission the work.



One basic type of information sought from the instrument is to identify areas of prior retouching or restoration. Frans Hals' *Pieter Jacobsz. Olycan*, (c. 1639) is shown below. At right is an XRF *elemental map* of the same area, showing the distribution of several elements, including lead (Pb), calcium (Ca), zinc (Zn), chromium (Cr) and titanium (Ti). Each element is assigned an arbitrary color (a technique called *false coloring*), as indicated in the legend in the lower part of the XRF image. This result shows the presence of zinc (Zn) in red and titanium (Ti)



Detail of Frans Hals (1582/83-1666), *Pieter Jacobsz. Olycan*, ca. 1639.
The John & Mable Ringling Museum of Art, SN251

calcium (Ca), zinc (Zn), chromium (Cr) and r (Ti). Each element is assigned an arbitrary color (a technique called *false coloring*), as indicated in the legend in the lower part of the XRF image. This result shows the presence of zinc (Zn) in red and titanium (Ti) in blue,, each of which represents a major component of different white pigments not available in the time of Hals. Artists' use of zinc oxide as a pigment in oil paint dates to around 1850, while titanium dioxide started to emerge on artists' palettes after 1920. Therefore, in this case, it is clear that these ar-

reas of retouching were applied long after the artist painted this portrait. A conservator may now decide to partially or completely remove the more modern retouching, if it is mismatched or discolored. In other situations, one can imagine that if a pigment emerging on palettes around 1845 or 1920 is discovered as a main component of a work purported to be done by an artist in the 1600s, the painting could be questioned as a copy or even a forgery.

Excerpts and images have been reproduced with permission of The John & Mable Ringling Museum of Art. You can read the complete article, "Science in the Service of Art", in *The Ringling Magazine*, Oct-Dec 2021, by Nick Barbi and Barbara A. Ramsay, Chief Conservator at The John & Mable Ringling Museum of Art. (See https://issuu.com/theringling/docs/ringling_mag_2021_oct-dec)

Nick Barbi, PhD, is an Art Analysis Consultant and Palm Aire resident.

4 facts

1. No matter where you are in Florida, you are never more than 60 miles from the Ocean. Awesome for vacations.
2. Once a year, thousands of Floridians stand at the state line and toss dead fish into Alabama. It's the annual Mullet Toss hosted by the Flora-Bama Beach Bar in Pensacola. The bar is located on the state border, partly in Florida and partly in Alabama.
3. Florida is the flattest state in the nation where the smallest difference between its highest and lowest points is only 345 feet.
4. Florida has more than 48,000 commercial farms and ranches, totaling over 9.5 million acres. This agricultural size makes the state Number One for fresh market tomatoes, watermelons, grapefruits, sugarcane, fresh market snap beans and oranges.

Palm Aire
Communities Council

Newsletter

Fall, 2021

Palm Aire Communities
Council, Inc.
P.O. Box 617
Tallevast, FL 34270-0617



CHAMPIONS COURSE

Reimagined

TEE TO GREEN RENOVATION
OPENING DECEMBER 1ST



GOLF, TENNIS, SOCIAL AND WEEKEND
MEMBERSHIPS AVAILABLE!

CONTACT SUZANNE GILE
DIRECTOR OF MEMBERSHIP

(941) 355-9733 • SGILE@PALMAIRE.NET
WWW.PALMAIRE.NET SARASOTA, FL 34243



Discover
The Club You Will Call Home

